



BUILDING LEADERS

PACIFIC LIFE BIBLE COLLEGE

Training Leaders To Make A World of Difference.



Profile of PLBC - *Our Tools Are Ready*

- Helping churches prepare effective leaders for over seven decades.
- **11% average annual campus enrolment growth and 28% average annual growth in class hours** since the merging of LIFE and PBC in 1997.
- **One of the most affordable tuition rates** for Bible colleges in all of North America, offering a broad spectrum of called and gifted young people the realistic goal of graduating debt-free and ministry ready.
- **High academic standards** with transferability to leading seminaries, earned by the consistent success of graduates who have completed advanced degrees.
- **High outcomes with 93% of graduates** (since the merger) **involved in church leadership** (pastors, church administrators, teachers, counselors, department or group leaders, church planting team members, and ministry interns) or graduate studies. **63% of those leaders are already employed in vocational church leadership roles.**

Table of Contents

Profile of PLBC	1	Our Financial Plan	13
Messages	2	Investing Our God-Given Resources	13
Our Graduates	3	Our Goal	14
Our Story	5	Our Giving Plan	14
Serving Our Foursquare Family	6	Working Together to Reach Our Goal	16
Serving Our Interdenominational Friends	7	Tax Credit Chart	16
The Challenge	8	Naming Opportunities	17
PLBC's Defining Moment	8	Professional Support	17
The Strategic Plan for Growth	9	Sample Pledge Form	18
The Master Plan	10	Conclusion	19



**A Message from
the President of PLBC**
ROB BUZZA

Most people aspire to make a lasting difference in this world, to leave behind a legacy of good works that continues far beyond their lifespan. The best way to do this is by investing in human potential - the only “commodity” with eternal value. When the lives we touch reach out to touch others the investment is compounded. This life-building process is at the heart of the Great Commission, the mission of PLBC, and this building project. While we have an immediate goal of constructing a building, our ultimate purpose is building lives.



**A Message from
the National President**
TIM PETERSON

PLBC is more than just an institution of education. In reality, our Bible college is a team of people ~ faculty members, administrators, governors ~ who are committed to make a difference in the lives of men & women of purpose and destiny. These leaders are being shaped into the likeness of Jesus Christ (Rom. 8:29 - NIV) as they find out for themselves what it means to be heirs in the kingdom of God (Col. 1:12,13 - NIV). That is the “legacy” on which each of us build when we invest in PLBC’s future.



**A Message from
the Co-Chair**
BARRY BUZZA

The Psalmist wrote, “He goes to and fro... carrying his bag of seed.” Every believer carries with him a bag of living seeds, each full of potential. Our mandate is to listen carefully to the landowner’s directions as to where to sow them. He told us to look for good soil.

PLBC is good soil. Every person I’ve met here has come through sacrifice. By their commitment to studying God’s Word and maturing in their faith, the students have demonstrated to me that this is a ministry worthy of my commitment. I’ve chosen to make a large deposit of my seeds in this place.



**A Message from
the Co-Chair**
JIM ROGERS

It has been my joy to serve as the Chairman of PLBC's Development Council. As someone who attended the college coming out of high school, I know personally about the importance of building a sound foundation for the future.

What I learned at LIFE helped shape my life as a father, businessman, and church leader. PLBC is committed to helping young people and the Foursquare Church of Canada rise to their full potential. We need to, in turn, dedicate ourselves to building a solid foundation for the future of the college.

Our Graduates

Our story is still unfolding through the adventures of our graduates spanning over seven decades:



Missionaries, like Steve ('87) and Andy Falkiner who moved on from successful assignments in Nepal and Sri Lanka and are now pioneering the Foursquare National Church in New Zealand.

Church planters, like Ambrose ('77) and Lynda Anyanwu whom God has used to found a 700 member central church in Eziama, Nigeria, ten satellite churches, an orphanage, a grade school, a Bible College, a Basic Skills College, and a hospital.



Pastors, like Barry McGaffin ('64), a pastor for four decades, now leading an influential church and mentoring other pastors here and around the world as the Director of Missions for the Foursquare Gospel Church of Canada.

Youth pastors, like Chris ('99) and Liza Jordan, who came to us from an independent church and are now leading a vibrant Foursquare youth group.



Children's leaders, like Krystle Oudit ('05) who arrived at PLBC from another nation (Trinidad), graduated this year, and now serves as Children's Pastor in a Foursquare Church in Calgary.

Worship leaders, like Graham Borch ('79) who combines carefully honed musical skill with a sensitivity to the Spirit of God, modeling true worship for his congregation and the other worship leaders he trains each week.



Professors, like Dr. Cheryl (Hetherington) Iverson ('68) who serves as Associate Dean of Academic Affairs and teaches Old Testament studies to some of the most promising leaders in North America at Oral Roberts University in Tulsa, Oklahoma.

93% of graduates either serving in church leadership or enroled in graduate studies.

Our Graduates (Cont.)



Writers, like Barry Buzzza ('71) who planted and now pastors the largest Foursquare church in Canada and published ten books designed to direct others around the globe toward a Christ-centered life.

Counselors, like Carol Smith ('00) who recently passed on to her reward, leaving behind a legacy in Higher Ground Ministries of changed lives, once homeless, helpless, or drug-addicted, now transformed by the power of the gospel.



Chaplains, like Helen Winter ('82) who was the first woman chaplain hired in B.C. to work in Corrections.

Community leaders, like Marvin Hunt ('75), a city councilor for Surrey, B.C., who also chairs one and serves on another of the two most powerful committees in the Lower Mainland, working with combined budgets in excess of 1 billion dollars.



These are just a few examples of hundreds of our alumni who are making a world of difference. For more on some of their stories, check out www.pacificlife.edu/alumni.



"The greatest gift we can give to the generations following us is the gift of opportunity – the opportunity to climb higher, go deeper, and press further than we could. This goal is central to my life's own direction. PLBC is committed to this goal in the area of spiritual leadership and I am delighted and honored to join them in the process."

— **Jerry Cook** (PLBC Board of Governors member)

"The time I spent in the Bachelor of Arts in Pastoral Ministry program at PLBC was formative for my life and ministry. The faculty inspired me to continue with theological studies. After grad, I earned a Master of Divinity from Regent College (Vancouver, BC) and entered the Doctorate program at The King's College in Van Nuys, California."

— **Cheryl Barnettson** (First Nations Unit Supervisor, Foursquare Canada)



Our Story

Our unique vision grew out of our unique story. What we know as PLBC today began as two separate Bible colleges, LIFE Bible College of Canada and Pacific Bible College. **Two long-standing colleges with one common purpose** and complementary strengths joined forces to function as a single educational entity.

LIFE Bible College of Canada (LIFE) was founded by the International Church of the Foursquare Gospel in Vancouver, September 1928, in the wake of a worldwide Pentecostal revival and with a vision to reach Canada for God.

Lacking the space for student dormitories, LIFE decentralized its programs through an innovative network of church institutes, known as LIFEline, creating a “college without walls”.

Meanwhile, in October 1972, **Pacific Bible College (PBC)** began as an inter-denominational innercity ministry to young people in downtown Vancouver, eventually moving in 1979 to our current 40

acre Surrey campus. PBC’s distinct approach to training young people included its unique one-year short-term missions experience called LifeLaunch.

PBC and LIFE joined forces to become Pacific Life Bible College in 1997 and now offers a strong central campus with distance learning programs that reach around the world.

PLBC offers the best of both worlds – a stable denominational Bible college linked with an interdenominational network of ministers and ministry opportunities.

PLBC is an affiliate society of the Foursquare Gospel Church of Canada, constituted with its own provincial charter and governed by a Board of Governors. The college is also represented on the Bible Fellowship Housing Society, also an affiliate of FGCC, which manages the campus properties and facilities shared by PLBC, Bible Fellowship Foursquare Church, and Regent Christian Academy. **These holdings have been recently assessed at over \$13 million**, before the current building project is added.



Serving Our Foursquare Family

As the only Foursquare college in Canada, PLBC has maintained as a priority the resourcing of Canadian Foursquare churches. Through numerous surveys and pastoral forums, Foursquare constituents have shaped the turning points of our history:

Degree-Granting Status (1988) – Both LIFE and PBC incorporated with the province and achieved the right to grant recognized degrees.

LifeLine (1990) – LIFE decentralized the college academic programs through a network of Foursquare church institutes to assist churches in their own leadership development.

Leaders Track and Degree Upgrade (1992) – LIFE created fast-track programs for mature students already active in church leadership.

Flexible Distance Education (D.E.) Delivery (1992) – LIFE expanded the distance education department to include independent studies courses, making ministry training available to anyone anywhere.

Lifelaunch (1994) – PBC designed an innovative one-year campus program of foundational training and short-term missions to help young people discover God's will for their lives.

PLBC Campus (1997) – PBC and LIFE merged to provide a strong central campus, adding even more support and credibility to the distance education department.

Professional Development (2000) – PLBC began to offer intensives and modular classes, such as the Church Planting Academy, as well as distance learning options for the purposes of meeting licensing requirements and providing ongoing professional development.

National Coordination – As Foursquare Canada grows the role of the college becomes increasingly important in coordinating, standardizing, and resourcing local church-based or regional institutes.

Other Services – The expansion of our staff as a result of the merger has allowed us to serve the churches in other ways, such as providing resources and expertise in evangelism, church music, Christian Education curriculum, book discounts, and computer software.

The end result is that 40% of Canadian Foursquare pastors have been trained or recruited primarily through PLBC and many more are receiving upgrading through our professional development programs. We will continue to improve on that percentage with renewed emphasis on regional scholarships and institute resources.

The investment of Foursquare Canada in its college and her graduates for over seven decades has yielded eternal dividends of countless souls saved, churches planted, influential leaders trained, and doctrinal consistency preserved. Every dollar invested has come back multiplied.

Serving Our Interdenominational Family

The cornerstone of Angelus Temple and of the Foursquare movement is its dedication “to the cause of interdenominational and world-wide evangelism”. Our pastors carry on in the legacy of the Foursquare founder by actively promoting unity among churches and their leaders to bring about community transformation. PLBC’s unique blend of nations and denominations offers an effective environment for leaders-in-training as they learn how to work together in ministry.

50% of campus students and several of our faculty come from 24 different denominations and church groups, including several independent churches who have no college of their own to train their leaders.

Strategic partnerships have been formed, such as our exchange program with Gateway Missionary Training Centre whereby we provide biblical and theological training for their students while they provide missiological modules for our students preparing as missionaries.

These collaborations have carried over into curriculum development, where PLBC has joined with other ministry educators to create resources endorsed by the Evangelical Fellowship of Canada (EFC).

PLBC has served as a bridge, bringing several non-aligned leaders and churches into Foursquare, as well as exposing Foursquare leaders to the wealth of resources and leadership available outside our “immediate family”.

Various college associations also create an environment for national and international cooperation and collaboration, providing vital connections between Foursquare Canada and other key churches and parachurch organizations.

Churches grow and communities are transformed when their leaders pray and work together. This value has always been part of Foursquare’s DNA and continues to be reproduced through PLBC’s graduates.

“As I write this there are tears of joy and thankfulness to the staff and students of PLBC for the input you had in the life of our daughter. Oh what a year she had! Oh how she misses you all- the gift these few months have been will be one that lasts a lifetime. Thank you for loving and caring for our daughter. Thank you for teaching her to reach deep within to the very depths of what God has placed in her. Thank you for bringing her life long friends. Thank you for your prayers. For an insecure young woman who began- you nurtured a mature, confident young woman in the end. Our gratitude always.” -**Testimonial of a Parent**

Every dollar invested has come back multiplied.

The Challenge

With rapidly expanding programs and corresponding enrolment growth, **the current facilities are no longer adequate to meet the needs of our student body and our larger constituency:**

- Inadequate space for a vital facility on campus, **the college library**, temporarily housed in an older portable behind the dormitory.
- Minimally equipped and housed **computer lab**, located in the library portable.
- Urgent need for **more classrooms** of various sizes for future program expansion.
- Need for a large well-equipped **classroom for first-year classes**, currently being

conducted in a chapel space not conducive for classroom use.

- Need for a properly designed and equipped **video studio classroom** to be used in the ongoing development of church resources.
- Overcrowded **senior classes**, hampering the learning environment.
- Lack of **lounge space** for student interaction during class breaks, vital in maintaining student morale.

Space limitations have imposed a ceiling on growth. Plans for new programs and increased enrolment are entirely dependent on the construction of new facilities.

PLBC's Defining Moment

Every good story has a critical turning point. This is that time for PLBC. A new chapter is being written that describes a healthy and sustainable future. **The infrastructure being developed now and in the near future will broaden our foundation, preparing the college and the Foursquare Gospel Church of Canada for a new level of growth and influence.**



Space limitations have imposed a ceiling on growth

The Strategic Plan for Growth

PLBC's core programs are:

1. LifeLaunch - one-year missions experience
2. Pastoral Training - four-year B.A. degrees

Once these were well-established, PLBC stepped out of the box with unique and innovative approaches to three new specialties:

Missions with a modular semester at Gateway (a missions specialty school in Langley), followed by a three-month field internship.

Church Planting (CPA) professional development in week-long intensives, combined with ongoing coaching.

Music training (IMM) for worship leaders and musicians in a contemporary and practical two-year program.

As space is made available, five more specialties will take on their own unique style over the next three years under the banner of

“training leaders to make a world of difference”:

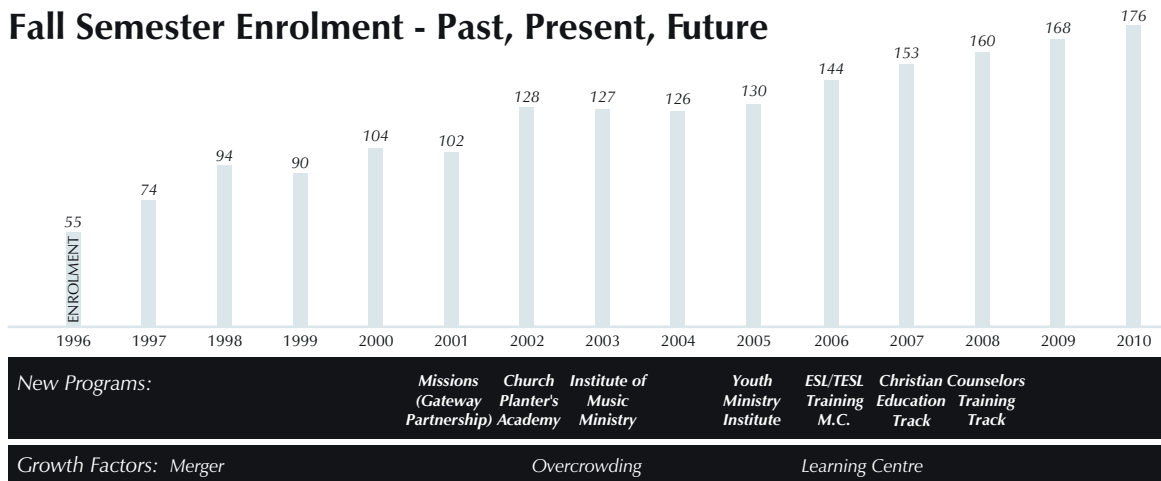
Youth Leadership (YMI) is being introduced in the fall of 2005 with a two-year track that offers more youth specific courses and internship requirements than most four-year programs.

International School (ESL) will start in the summer of 2006 off-campus, initially offering college-level ESL training, but later adding a TESL track to prepare ESL teachers. There is a strategic opening for this inroad of ministry to cities and missions to unreached nations.

Master's Commission (MC) partnership will better position the college to transfer credits for MC students, provide scholarships, and even offer on and off-campus Master's Commission modules for area churches.

Christian Education (CE) will be another two-year track designed to prepare CE leaders, children's pastors, and teachers.

Fall Semester Enrolment - Past, Present, Future



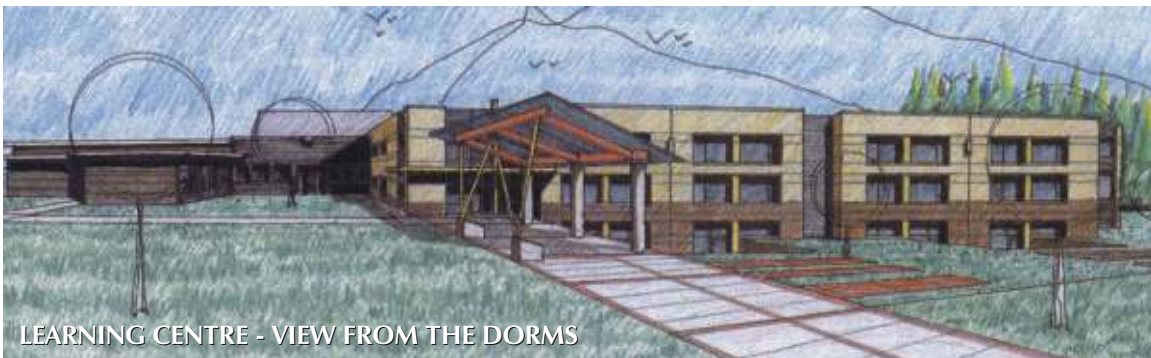
The Master Plan - *Clearing the Ground of Every Obstruction*

The future of PLBC's campus is unfolding in progressive phases. **Our goal is to provide a learning environment for 300 - 400 students.**

Phase One is the construction of the **Learning Centre**, a new three storey building being built next to the church, the K-12 school and the cafeteria commons. PLBC will occupy the lower level of the new building. This building project is being done in partnership with Bible Fellowship's K-12 Christian School, Regent Christian Academy, with whom we share our college campus. The school (RCA) will occupy the top two floors, raising \$2.5 million of the \$3.5 million total construction costs. **PLBC will raise the remaining \$1.1 million (including furnishings) to complete the 12,000 sq. ft. lower level in three stages:**

Stage One is the completion of the lower floor so that it is in a state of readiness for the finishing of the various rooms. The hard costs for the lower floor total \$500,000 which works out to \$42 a square foot.

Stage Two is the completion of the finished construction of the lower level. The floor plan for this Learning Centre will include space for a 2,000 sq. ft. library, twice its current size, six classrooms, and much-needed student lounge space between the class areas at a total cost of \$500,000 for an amazing cumulative total of \$84 a square foot.



LEARNING CENTRE - VIEW FROM THE DORMS



NEW LIBRARY



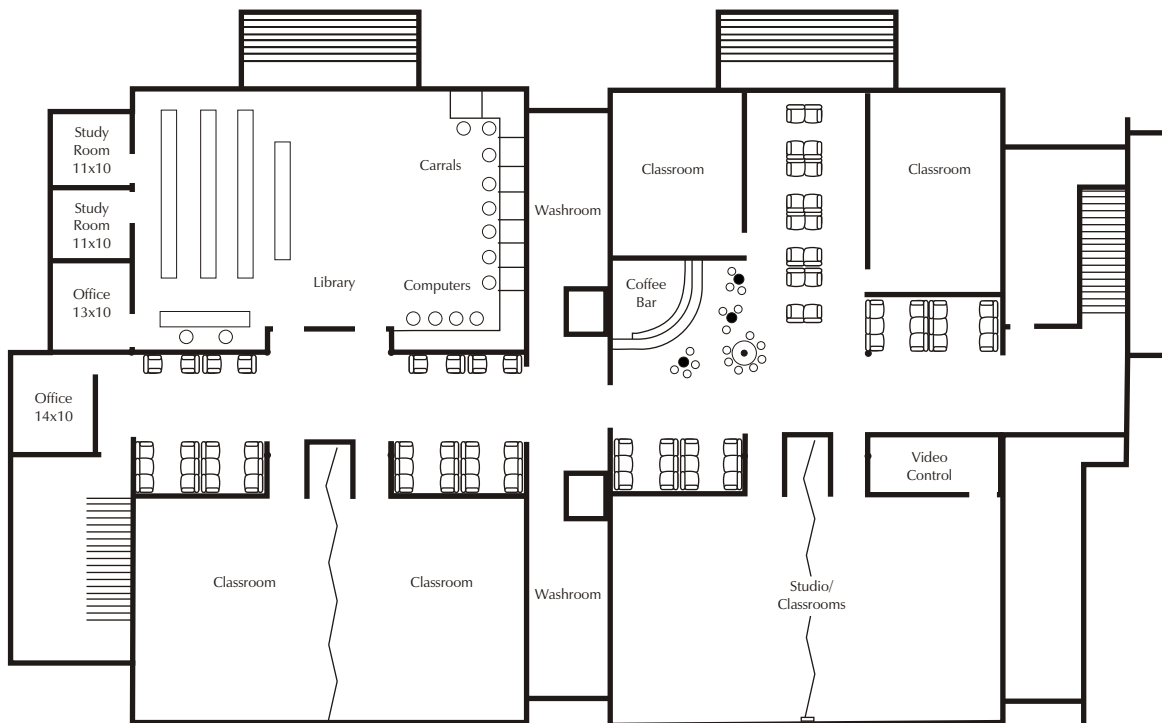
STUDENT LOUNGE

The Master Plan (Cont.)

Stage Three is the completion of new furnishings, library equipment and computers for the new space. The cost for these items, along with contingencies is \$100,000.

This building project is our most urgent and ambitious, but only the first phase of a comprehensive master plan.

Phase Two focuses on the A-frame dorm building near the west side of the property. When RCA's ESL program is moved to the new building, the A-frame is scheduled to be renovated inside and out to become a more contemporary focal point of the college. In addition, the men's dorm rooms require new furnishings (the women's dorm rooms were refurnished this past year). The estimated cost of renovating the exterior, improving the classrooms and office areas, and refurnishing the dorm rooms is \$250,000. Any excess funds remaining from Phase 1 will be immediately directed to Phase 2.



The Master Plan (Cont.)

Phase Three anticipates the construction of a new women's dormitory building, including additional student lounge and recreational space, adjacent to the existing dormitory.

Phase Four involves the development of recreational facilities. The Housing Society already owns four acres of buildable land west of the dorms suitable for this use. The amenities, which would include an indoor pool and fitness centre, would not only serve the students during the school year, but also make the college a highly desirable conference and retreat centre during the summer months. This maximizes usage and creates a much-needed source of revenue to offset operating costs.



Our Financial Plan

The total financial investment needed to undertake Phase One of this project is \$1.1 million dollars. This figure represents the completed cost of the new Learning Centre.

Decades of balanced financial reports demonstrate the fiscal responsibility exercised by the college executive and the Board of Governors. Projections based on past performance indicate sufficient growth in revenues through enrolment and tuition increases to cover the additional operating costs for the new Learning Centre. **All capital costs, however, must be raised in full, as the college does not have the**

ability to service a mortgage.

An affordable tuition rate is one of the important distinctives of PLBC. **We have been able to maintain affordability thanks to the generous support of faithful donors and churches, a reliance on part-time faculty who bring instruction fresh from the field, and an avoidance of capital debt. This makes it possible for most of our graduates to complete their studies financially free and ready to pursue internship opportunities.** This in turn contributes to our unusually high outcomes of graduates serving in church leadership. All of this is made possible when we work together to build mortgage free.

Investing Our God-Given Resources

PLBC is committed to moving ahead with its vision, investing God's resources in preparing leaders for the future of our churches and communities across Canada and the Pacific Northwest. **We will continue to maintain our financial policies, endeavouring to be debt-free, operating within a balanced budget and following a documented 3-5 year operational plan.**

The campaign is largely about stewardship. Stewardship, in its simplest terms, is putting

God's priorities before our own. It recognizes the fact that everything belongs to God: our land, our resources, our time, and even our talents. Since everything belongs to God, we are not the owners, but rather the managers of what God has entrusted to us. Jesus taught us to take what He has given us and reinvest it in human life, the only eternal commodity. **While this project involves the construction of a building, its purpose transcends the material. This is about building lives!**



"Coming to PLBC directly from high school to complete the Life Launch program was an amazing experience for me. Living in dorms, going to classes, worshipping in chapels, and serving on a month long missions trip to Fiji & New Zealand all helped me grow in my relationship with God and prepared me for university."

— **Lindsey Kellington** (Life Launch Grad)

Our Goal - *Building Lives of Obedience into Maturity*

Student tuition revenues, general contributions, and monthly church support are sufficient to meet operating expenses, but they will never be enough for capital development costs. This is typical of most not-for-profit colleges.

Therefore, we are relying solely on the special contributions of individuals, churches, foundations, college parents, Christian businesses and college alumnae from across Canada and the Pacific Northwest - all who share our vision of training leaders to make a world of difference. With this essential partnership the college will maintain the high standards and the strong theological heritage that has been our mission from the beginning. We will continue to be a living testament of service to the Foursquare family and prepare the leadership needed for the church of the future.

The goal of our Capital Campaign is to raise a minimum of \$1.1 million in gifts and pledges to complete phase one. With God's help we hope, and expect, to meet that

goal. This level of support is not unprecedented in our college. In the past our forebearers faced even greater challenges and demands on their faith that established the foundation for PLBC today.

Our Planning Study—conducted in the spring of 2005— indicated that with greater clarity on the building project there would be a corresponding high level of support for the campaign. **Based on the results of the study, and subsequent analysis of our current situation by our consultant, we believe that, with everyone working together, and with significant levels of planned gifts, it is possible for PLBC to raise \$1.1 million.** By doing so we will stay within our ability to operate the new facilities and continue expanding programs.

Together, it is one way to leave behind a worthy legacy, an investment that continues to pay out the dividends of transformed lives for generations to come.

Our Giving Plan

Each gift to the campaign, regardless of size, will contribute to our success as a Bible College in the fulfillment of our financial goals.

Personal contacts by proven leaders, where you will have opportunity to discuss PLBC's vision, are intended to help you reach a confidential, thoughtful and prayerful decision

about how you are called to respond.

The key to a successful campaign is sacrificial giving. Sacrificial giving will mean something different to each person. For some, a commitment of moderate size will represent a sacrifice. In other cases, a larger gift will be possible. Not equal gifts, but equal sacrifice is required!

Our Giving Plan (Cont.)

With God's leading, we are confident we can reach and even surpass our goal as we respond to His call. **There are two ways to give to the campaign:**

Faith gifts and pledges – cash gifts made over the next three years.

Planned gifts – gifts funded from assets or accumulated resources, rather than current cash flow.

Faith Gifts and Pledges

Every congregation, household or individual associated with our college will be invited to make a faith gift and a financial pledge to the campaign. This special contribution – over and above your current annual giving – can be spread over a three-year period.

Planned Gifts

This is a way to make a sacrificial gift from your accumulated resources and assets. Because of the tax advantages, this gift will not negatively impact your current financial circumstances.

Future Gifts

An option for phases three through four.

Bequests through a Will

Bequests are an easy way to leave a final gift to PLBC. You can leave either a specific gift of cash, artwork or other assets, or a portion of your estate.

Life Insurance

Making the college a beneficiary of a life

There are two major categories of planned gifts: immediate gifts and future gifts.

Immediate Gifts

The preferred plan for phases one and two.

Cash or Securities

These gifts may take the form of cash, current life insurance policies, stocks, bonds or mutual funds. Making a gift of securities or mutual funds can reduce capital gains tax you might owe.

Charitable Gift Annuity

You can receive tax-free retirement income along with an immediate gift to PLBC. This is a gift that gives back to you.

Gifts in Kind

Donors considering gifts of equipment or real estate or other assets should contact PLBC campaign office for advice. The college has a list of specific equipment needed for the building. Gifts of equipment or furnishings will be gratefully accepted and receipted for tax purposes.

insurance policy will give you a tax benefit today and provide a future gift to PLBC. With a modest monthly insurance premium for a new policy, you can leave a substantial legacy to the college in the future. Your annual premiums are tax deductible.

Charitable Remainder Trust

You place cash, property or securities in a trust for PLBC and receive a guaranteed income for life, with substantial tax savings.

Working Together to Reach Our Goal

	AMOUNT OF GIFT	NUMBER OF GIFTS REQUIRED	ANNUAL AMOUNT OVER 3 YEARS	SUB-TOTAL OF GIFTS	ACCUMULATED TOTAL OF GIFTS
FOUNDERS GIFTS	\$250,000	1	\$83,333	\$250,000	\$250,000
	\$100,000	2	\$33,333	\$200,000	\$450,000
	\$50,000	2	\$16,660	\$100,000	\$550,000
	\$30,000	4	\$10,000	\$120,000	\$670,000
LEADERS GIFTS	\$15,000	4	\$5,000	\$60,000	\$730,000
	\$9,000	8	\$3,000	\$72,000	\$802,000
	\$4,500	12	\$1,500	\$54,000	\$856,000
BUILDERS GIFTS	\$3,000	15	\$1,000	\$45,000	\$901,000
	\$1,500	30	\$500	\$45,000	\$946,000
	\$1,000 & LESS	MANY			\$1,100,000
TOTALS		150+			\$1,100,000

Tax Credit Chart

MONTHLY 3 YEAR COMMITMENT*	MONTHLY 3 YEAR COMMITMENT (AFTER TAX)	TOTAL GIFT TO THE CAMPAIGN OVER 3 YEARS	TAX CREDIT**	ACTUAL COST TO GIVER OVER 3 YEARS	ANNUAL TAX CREDIT
\$50	\$28	\$1,800	\$792	\$1,008	\$264
\$100	\$56	\$3,600	\$1,584	\$2,016	\$528
\$150	\$84	\$5,400	\$2,376	\$3,024	\$792
\$250	\$140	\$9,000	\$3,960	\$5,040	\$1,320
\$300	\$168	\$10,800	\$4,752	\$6,048	\$1,584
\$400	\$224	\$14,400	\$6,336	\$8,064	\$2,112
\$500	\$280	\$18,000	\$7,920	\$10,080	\$2,640

*Based on a commitment over 3 years (36 months). **Based on a marginal tax credit rate of 44%.

Naming Opportunities

The Learning Centre provides a selection of naming and commemorative opportunities for supporters of the college.

For exceptional gifts, the college is pleased to recognize the generosity of the giver by naming a physical space to honour the donor or a person whom the donor may wish to honour.

Naming and commemorative opportunities are carefully selected after discussion with the donor to ensure that the opportunity appropriately reflects the donor's level of support and interest. To learn more about naming possibilities and availabilities visit www.pacificlife.edu/buildingleaders.

Naming/Commemorative Opportunities: entrance, classrooms, video studio, coffee bar, student lounges, computer lab, computer stations, library collections, library office, information desk, study rooms and carrels.

Unless you request anonymity, every gift will be recognized and commemorated. Founders, Leaders, and Builders gifts will be permanently recognized on a Donor Wall.

Professional Support

Larger gifts require careful planning to take advantage of Canada's tax laws that are designed to encourage generous giving. As part of the campaign, we will have a professional financial planner, knowledgeable in all aspects of charitable gifts and planned giving, available to meet with you to discuss specific giving opportunities. No products will be promoted other than in a generic fashion and the final decisions will be left with the individuals. For assistance with planned gifts please contact Rob Waller at waller@waller.ca.

Please consult your financial advisor or accountant to determine your actual savings.

FOR OUR U.S.A. PARTNERS: Our Foursquare leaders have developed a key alliance with churches in the U.S. in order to issue contribution receipts acceptable to the IRS. For more information please call the campaign office at 1-877-597-7522 (PLBC).

For your convenience, PLBC provides an option for monthly giving through direct deposit. We are also prepared to receive donations by debit cards, Visa, or Mastercard.



Art Wolf Memorial Library - The new library has now been named the Art Wolf Memorial Library in commemoration of Dr. Wolf's dedication and service as the College's president from 1965 to 1986.

"Every book in Art Wolf's library contained the following quote affixed to the inside of the front cover: 'Study to show thyself approved unto God - 2 Timothy 2:15'. Art and Joanne Wolf passionately and tirelessly served the Foursquare Family of Canada and the students of this Bible College with one purpose - the approval of God. May all who study in this new facility honour that same high and holy purpose." Barry McGaffin ('64)

BUILDING LEADERS
PACIFIC LIFE BIBLE COLLEGE CAPITAL CAMPAIGN

FAITH PLEDGE FORM

Name: _____ Date: _____

Mailing Address: _____

Postal Code: _____ Phone: _____

Church Name: _____

I/We would like to support Pacific Life Bible College's growth and development plans. In order to assist in the financial planning for the costs of the new Learning Centre it is our firm intent, as the Lord makes possible, to contribute a total of \$ _____ as follows:

A An initial cash gift of \$ _____.

AND

B \$ _____ to be paid in _____ monthly payments
of \$ _____ commencing _____, 200 _____.

OR

C \$ _____ to be paid in _____ annual payments;
\$ _____ by _____, 2005
\$ _____ by _____, 2006
\$ _____ by _____, 2007
\$ _____ by _____, 2008

OR

D \$ _____ to be paid in a single payment on/by _____.

E I am interested in knowing more about these types of gifts:

- Shares or Stocks Bequests Charitable Remainder Trusts
 Life Insurance Charitable Annuities Other: _____

F I/We would like to dedicate our gift to a loved one, group or congregation. The name on the donor wall/plaque (please print) _____.

Signature(s): _____

I/We wish our gift to be anonymous.

Notes: 1. Receipts for income tax purposes will be issued for all funds received up to and including December 31 of each year, in accordance with the current Tax Regulations. 2. The PLBC Board of Governors will respect the confidentiality of all donors, and understands that pledges may be revised or suspended due to changing circumstances. 3. PLBC respects your privacy and promises to keep personal information confidential as outlined in our privacy policy.



[Please make cheques payable to "Building Leaders Fund"]
Building Leaders Fund, PO Box 55509, Impact Plaza, Surrey, BC V3R 0J7 CANADA
Phone: 604-597-9082 Ext. 255; Fax: 604-543-8417; campaignoffice@pacificlife.ca

PLEDGES

I wish to pay by:

Cheque (Payable to "Building Leaders Fund")

Post-Dated Cheques (Payable to "Building Leaders Fund")

Pre-Authorization Remittance* (PAR) - Please enclose voided blank cheque

VISA OR MASTERCARD*

Card Number _____

Expiry Date _____

*For Monthly Payments:
Check 10th or 25th of month

Conclusion

“Provide purses for yourselves that will not wear out, a treasure in heaven that will not be exhausted, where no thief comes near and no moth destroys.” Luke 12:33

God has entrusted us with this moment in PLBC’s history. The need for us to work together faithfully now is great – **this is truly a time for making an investment in eternity.**

There are many opportunities to lay up treasure in heaven, as you demonstrate the love of Christ to the students and families of PLBC:

- You can get involved in new or expanded ministries of the college.
- You can give financially to support these ministries and our new facility.

· You can pray for the students, faculty and college leaders as they work together to position PLBC for a whole new level of influence.

· You can commit to a deeper walk with the Lord as we nurture our spiritual walk together.

On behalf of PLBC, we sincerely thank you for welcoming us into your church or home, and for your earnest and prayerful consideration of what God is leading you to do.

This is an exciting time for PLBC! We look forward to what God will do through each one of us to build leaders and, through them, transform our communities.

Our tools are ready at hand
for clearing the ground of every obstruction
and **building lives of obedience**
into maturity. 2 Corinthians 10:6
The Message



Pacific Life Bible College

15100-66A Avenue
Surrey, BC
V3S 2A6
CANADA

Phone: 604-597-9082
Fax: 604-597-9090
plbc@pacificlife.edu
www.pacificlife.edu